

Date: 16/10/2025

Letter No: SL-2025-001

Subject: Update of Maintenance PRO Dr Remote Access

Dear Hitachi Construction Machinery Dealers,

We are pleased to announce an update to the Maintenance PRO Dr Remote Access system (hereafter referred to as "Remote Access"). This latest version introduces enhanced functionality and improved machine connectivity.

Key Updates

Remote Parameter Adjustment

This new feature allows you to better respond to customer needs by **remotely adjusting machine performance parameters**.

Improved Connectivity

Enhanced monitoring capabilities help reduce the risk of connection failures during remote operations.

Applicable Software Version

4.2.1.0 and later.

❖ A valid license for MPDr Remote Access (YA00017896) is required.

For any inquiries, please contact h.takami.jl@hitachicm.eu

Kind Regards,

Hiroki Takami



Product Manager, Solution Linkage

Appendix

1. Remote Parameter Adjustment

NOTE: Please inform the machine operator in advance of any parameter changes, as these may affect machine operation.

1-1. Scope

Machine: Configuration and machine control parameters.

Category	Adjustment/ Configuration Items
Main	Engine Speed Adjustment
	Pump Control Adjustment
	Valve Control Adjustment
	Solenoid Valve Calibration
	Cooling Fan Speed Adjustment
	Hydraulic Flow Rate Adjustment
	Electric Joystick Setting
Attachments	Hydraulic Flow Rate Adjustment
	Hydraulic Relief Pressure Adjustment
	Engine Speed Adjustment
	Actuator Speed Adjustment
	Selector Valve Setting
	Priority Setting
	2 Pump Combined Flow Setting
	Additional Pump Setting

Monitor: Configuration of the onboard main monitor functions.

Category	Configuration Items
Menu Setting (ON and OFF)	Display Configuration
	Setting Function
	Information Menu
	Service Menu
	Camera System
	Troubleshooting Display
	Maintenance Scheduler
	ECO/ Aftertreatment device Indication

1-2. Applicable Models

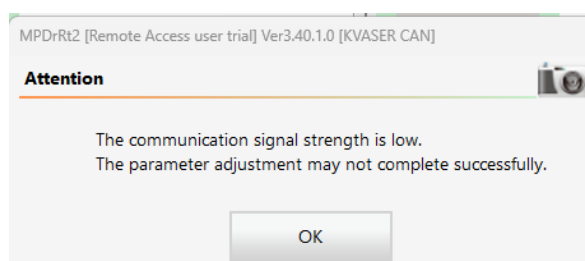
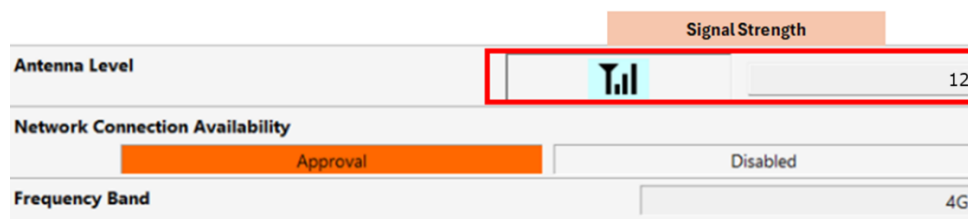
Crawler excavators from ZX95-7 to ZX890-7 class equipped with 4G communication controllers.

2. Improved Connectivity

Signal Strength Check

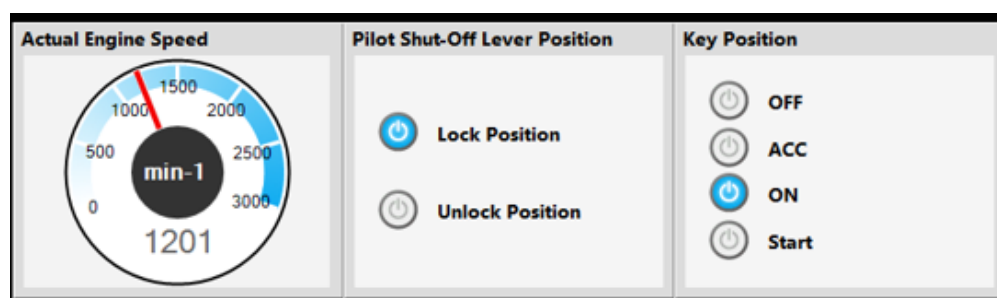
Before sending parameter updates, the system checks the signal strength between the machine and the network.

If the signal strength is below 20 (as measured by MPDr), a warning will be displayed to prevent communication failures.

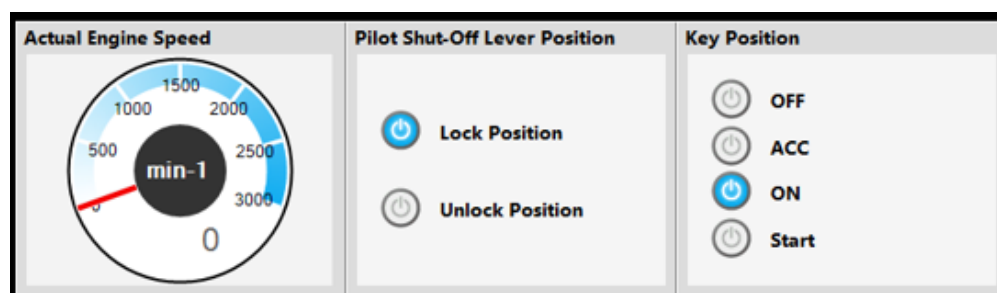


Machine Status Check

Before starting communication, the system verifies whether the machine is in a state that allows parameter/configuration updates. This helps prevent unintended update failures.



(Update **NOT** Allowed)



(Ready to Update)