

Date:29/09/2025  
Reference:PM\_ZXW29.09

Subject: Product improvements and new options for wheeled excavators.  
Category: **Product improvement and Option introduction**

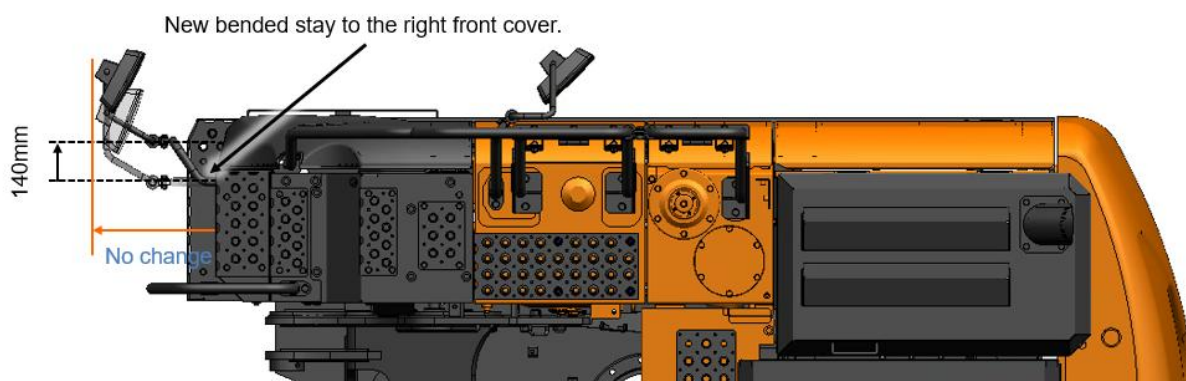
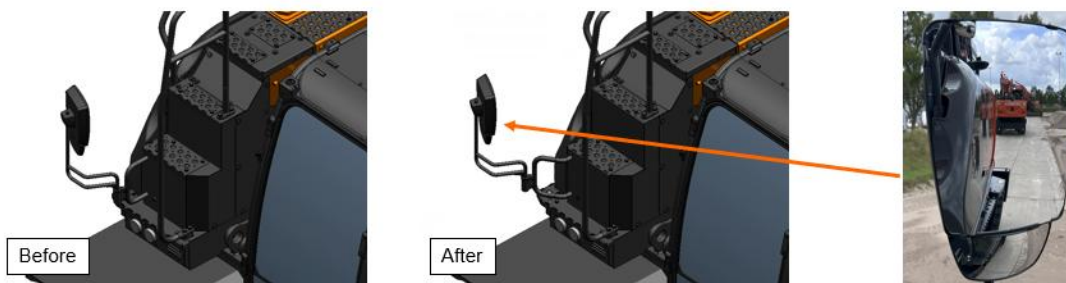
Dear valued Dealer,

We are excited to announce the introduction of two product improvements for Hitachi's wheeled excavators, as well as three new options. All designed to improve operator comfort, safety, and efficiency.

## PRODUCT IMPROVEMENTS

### Right Front Mirror Visibility Improvement:

In response to customer feedback, we have refined the design of the bracket on the control valve cover and the mirror stay. These changes shift the mirror position by 140 mm outwards, resulting in a significant improvement in rear-view visibility. Additionally, the new bracket position is making it easier to access the upper structure, improving safety.



Starting from HCME's production month September this enhancement will be implemented across all models, in the range of ZX135W-7 to ZX220W-7

The applicable serial numbers for the various models are the following:

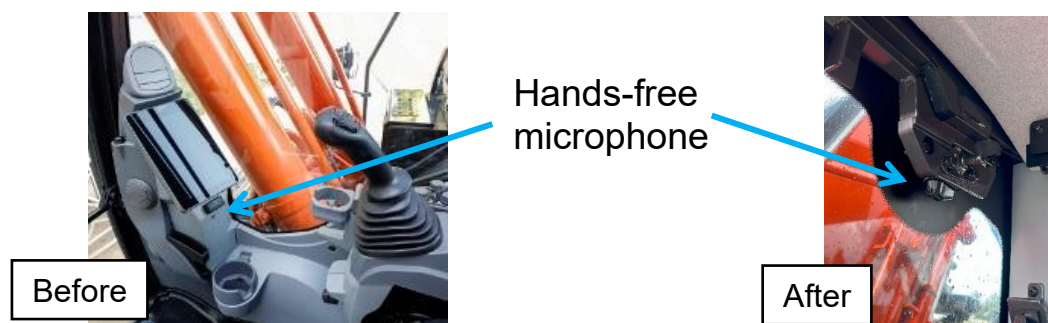
Model	Serial number
ZX135W-7	003550
ZX150W-7	100807
ZX155W-7	200645
ZX175W-7	300503
ZX180W-7	500738
ZX220W-7	005198

### Microphone position:

Another improvement we've implemented in response to customer feedback, is a change in the position of the hands-free microphone.

To ensure clearer phone conversations, the microphone has been relocated from beneath the monitor to the position under the front window locking bracket.

This improvement is applicable to ZXW-7 wheeled excavators, as well as ZX-7 crawler excavators. The applicable serial numbers for both product groups will be announced in an upcoming letter.



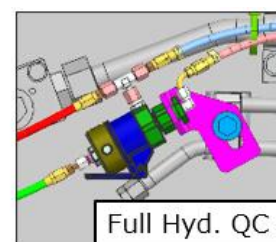
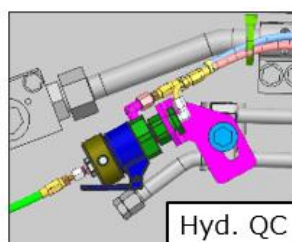
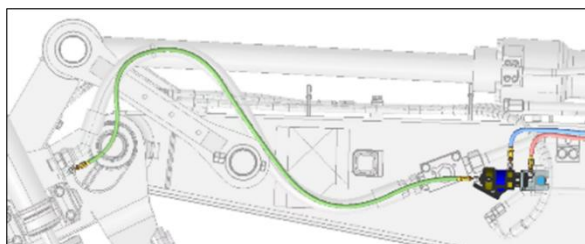
## NEW OPTIONS

### Automatic lubrication system for attachments:

We are very pleased to announce the introduction of an upgrade of the automatic lubrication system, adding the possibility to order it with a dedicated lubrication line (and return line to tank) for attachments. Designed to improve operator comfort and efficiency and to eliminate the need for dealer modifications.

On the left hand side of the arm a coupler will be fitted, making it possible to connect and disconnect the grease line without using tools. The option will be suitable for hydraulic, as well as full hydraulic quick coupler.





The amount of grease supplied to the front attachment is  $0.12\text{cm}^3$  / stroke (default), which can be reduced to  $0.04\text{cm}^3$  / stroke as minimum value.

### Caliber Power Grip Evolution 2:

The Caliber Power Grip 315/70R22.5 has been a well-established tyre in our portfolio and is already available as one of our tyre options for many years. However, in combination with the standard axles on the ZX175/180W-7, the overall width over tyres extends to 2584 mm. Exceeding the common road homologation limit of 2550 mm. And in combination with the wide axles of the ZX175W/180W-7 and ZX220W-7 the width over tyres reaches to 2574 mm.

To keep the width over tyres for the above mentioned models and axle combinations, within the standards of 2550 mm and 2750 mm, Caliber has developed a new tyre. Which is the Power Grip Evolution 2, available in the size of 295/80R22, and like the Power Grip 315/70 this is a renewed tyre.

The non-directional tread design allows flexible mounting in any position, without the need for an intermediate ring. Caliber highlights its *"impressive stability, high load capacity, and outstanding traction"*. With it's modern appearance and no gap in-between the tyres, it's an interesting new addition to our tyre portfolio.



**Please note:** the original Power Grip 315/70R22.5 remains available to order as well. And due interference issues, both Caliber tyres cannot be ordered on ZX220W-7 with standard axles.

### **Ride control without accumulator:**

In order to support and ease the installation of a higher-pressure accumulator than the standard accumulator for machines with heavy weight attachments, we are pleased to announce the introduction the possibility to order Ride Control system without accumulator. For reference, please check Service Bulletin 3 2025 0072

### **ORDER INTAKE**

Please be advised that the order intake for the three new options will commence on 23 September through Neptune.

### **ORDER DELIVERY**

First order delivery is expected for December 2025

### **MARKETING INFORMATION**

The schedule for the marketing materials is as follows:

Sales Manual (English): December 2025

Product photography: Available on Dealer portal in December 2025

### **WARRANTY**

In general these particular options are covered by HCME's standard warranty, which is well-known for its comprehensive coverage of standard products. However, options like tyres fall under the category consumable Parts and are therefore not warranted.

### **EXTENDED WARRANTY**

Upon request, a quote can be provided for items which are covered by HCME's standard warrantee. Further information will be provided promptly.

### **PARTS / SERVICE**

Towards the end of this calendar year we expect to complete a seamless integration of all tyre options into the HCME Parts & Service system. This ensures that parts are readily available through the ISF system and expertly managed by the Parts Center located in Oosterhout.

### **PRODUCT SUPPORT**

This follows the standard machine product support procedure of HCME. For direct assistance with Product Support matters (FIR, claim handling, etc.), please contact your regional product support specialist.

Kind Regards,

Wilbert Blom  
Product Manager Excavators  
Product Management